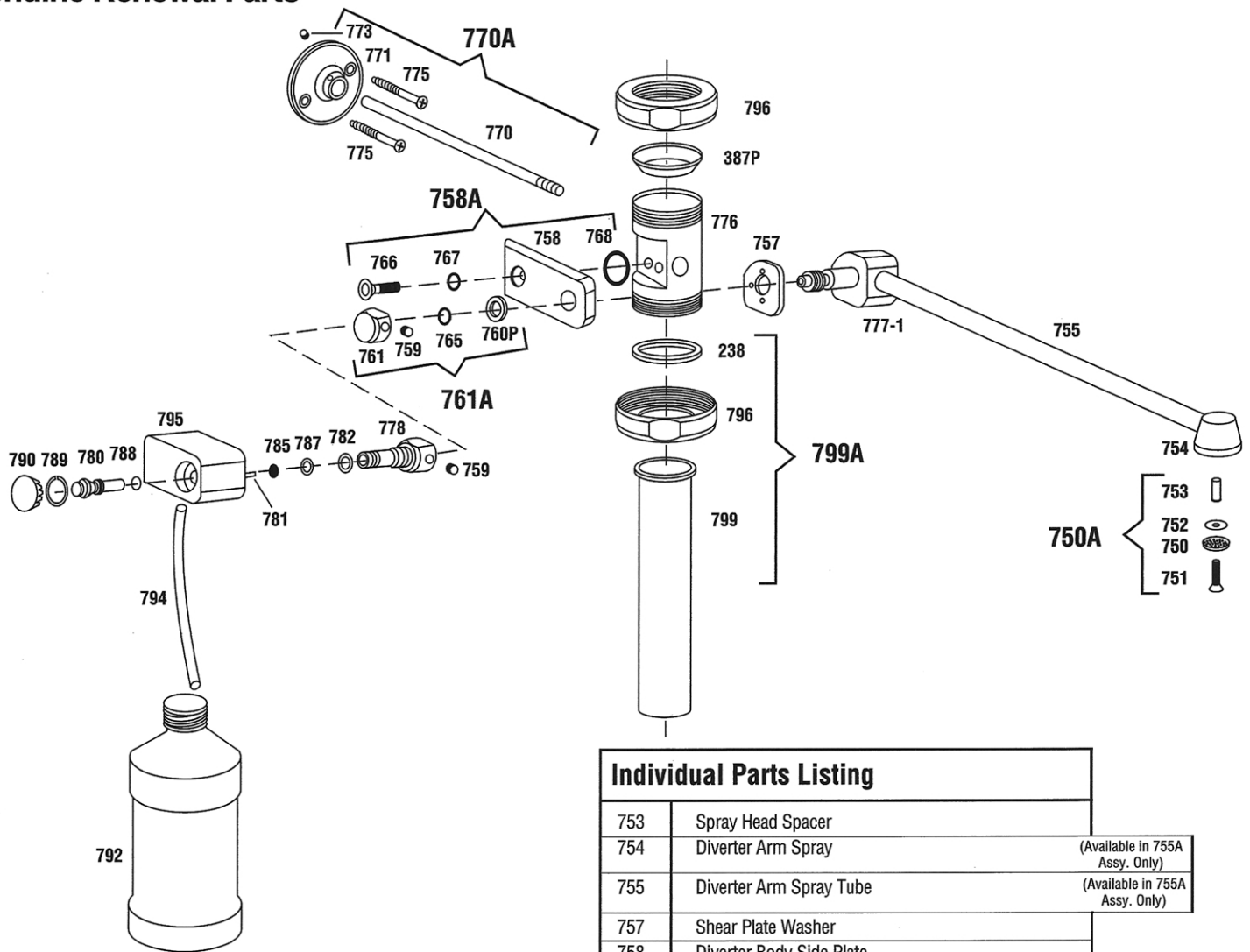


Delany Bedpan Diverter

Genuine Renewal Parts



Individual Parts Listing

753	Spray Head Spacer	
754	Diverter Arm Spray	(Available in 755A Assy. Only)
755	Diverter Arm Spray Tube	(Available in 755A Assy. Only)
757	Shear Plate Washer	
758	Diverter Body Side Plate	
759	Set Screw for Spindle Nut	
760P	Spindle Nut Washer (Plastic)	
761	Blank Spindle Nut	
765	"O"-ring for Spindle	
766	Side Plate Screw	
767	"O"-ring for Side Plate Screw	
768	"O"-ring for Side Plate	
770	Wall Support Rod	
771	Wall Support Wall Plate	
773	Wall Plate Set Screw (10 - 24)	
773-1	Wall Plate Set Screw (6 - 32)	
775	Wall Plate Screw	
776	Diverter Body	
777-1	Diverter Arm Pivot Block	(Available in 755A Assy. Only)
778	Deoseptic Spindle Nut with set screw 759	
780	Deoseptic Regulating Screw	
781	Deoseptic Bottle Block Roll Pin	
782	"O"-ring for Deoseptic Spindle Nut	
785	Deoseptic Check Valve Ball	
787	"O"-ring for Deoseptic Spindle Nut	
788	"O"-ring for Deoseptic Regulating Screw	
789	Snap Ring	
790	Deoseptic Bottle Block Cap	
795	Deoseptic Bottle Block	
796	Diverter Coupling Nut	
792	Deoseptic Bottle	
794	Deoseptic Bottle Tube	
799	#259 (MOD) (1 1/2x7 3/4")	

Partial Assemblies

750A	Diverter Spray Head Assembly
755A	Diverter Spray Arm Assembly
755A-1	Diverter Spray Arm Assembly for Deoseptic Bottle Unit
758A	Diverter Side Plate Assembly
761A	Blank Spindle Nut Assembly
770A	Wall Support Assembly
776A	Diverter Body Assembly
795A	Diverter Deoseptic Glock Assy. with spindle nut, & bottle with fluid.
799A	Diverter Lower Flush Connection Assembly

Individual Parts Listing

238	Coupling Washer
387P	Plastic Washer
750	Spray Head Disc
751	Spray Head Screw
752	Spray Head Screen