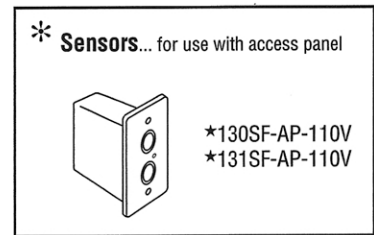
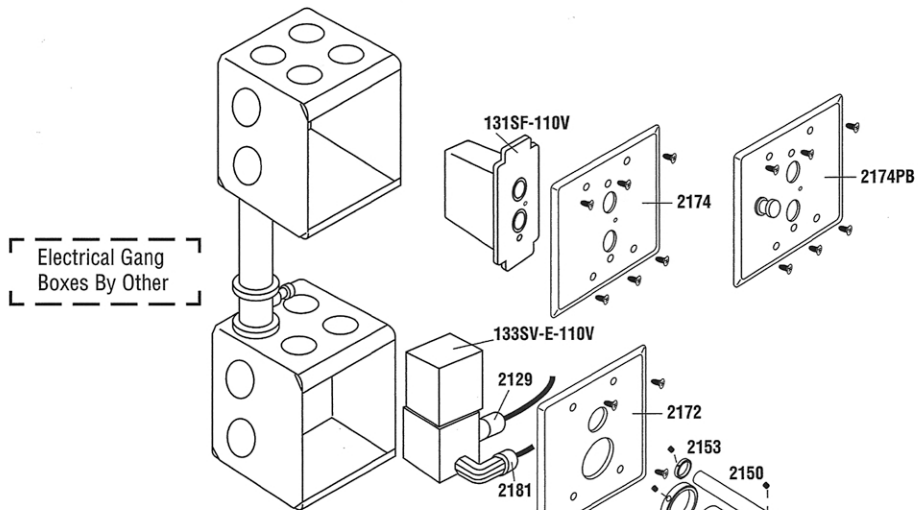


Delany Sensor-Flush

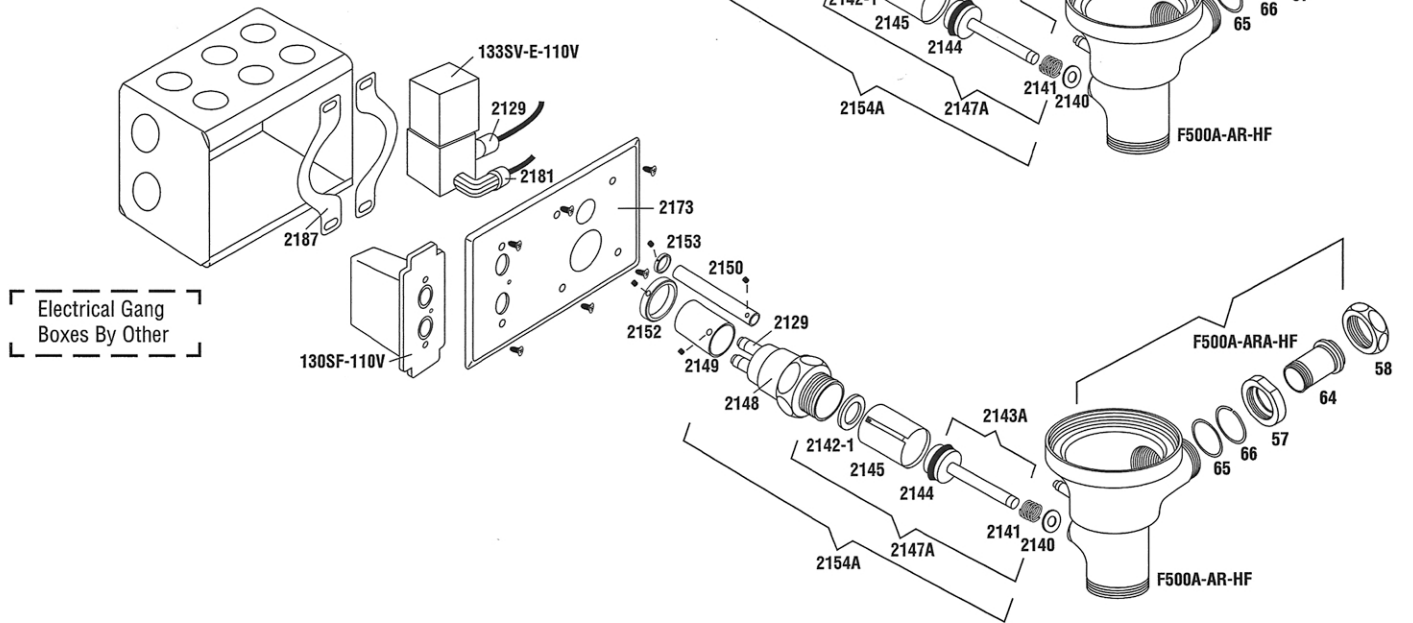
Genuine Renewal Parts

Exposed Water Closet Assembly

NOTE: For detailed parts information of the FLUSHBOY valve refer to Renewal Parts & Service Folder FV-3, Dtd. August 11, 1997



Exposed Urinal Assembly



Sensor-Flush Piston Assembly

Partial Assemblies	
Part No.	Description
2143A	Piston Operating Stem Assembly
2147A	Piston Internal Operating Assembly
2154A	Piston Valve Assembly

Individual Parts	
Part No.	Description
57	Clamping nut
58	Union Nut
** 64	KwikFit union tailpiece, 2" standard length overall (allows 4 1/2" to 5 1/2" centers. Complete with No. 65 and No. 66 parts)

Individual Parts Listing	
65	"O" ring
66	Clamping ring
2129	Straight release fitting (with black collar)
2130	Straight release fitting (with red collar)
# 2133	Nylon tubing (black in color)
# 2134	Nylon tubing (red in color)
2140	Handle pad washer
2141	Spring (for piston operating stem)
2142-1	Piston bore washer
2144	Cup washer (for piston operating stem)
2145	Piston sleeve
2146	Piston valve body (for concealed vlv.)