

*Delany Products  
introduces...*

## **The TruFamily of Products**

Our top-of-the-line products, **TruSaber** and **TruEdge** now with the patented **TruStop** and Delany Masherator as standard along with other Delany Differences are unmatched in style and features.



The patented **TruStop** with **TruChek** is a breakthrough in commercial flush valve technology.



P.O. Box 411, Charlottesville, VA 22902  
Ph: 434-296-0166 Fax: 434-977-3596  
[www.delanyproducts.com](http://www.delanyproducts.com)



**The Delany Difference**





## The Delany Differences

For over 140 years and four generations, our family-owned and operated company has always stood out in the field of commercial flush valves; for our innovations, our quality, our valves' efficiency and streamlined looks.

We call it Simplicity in Design.

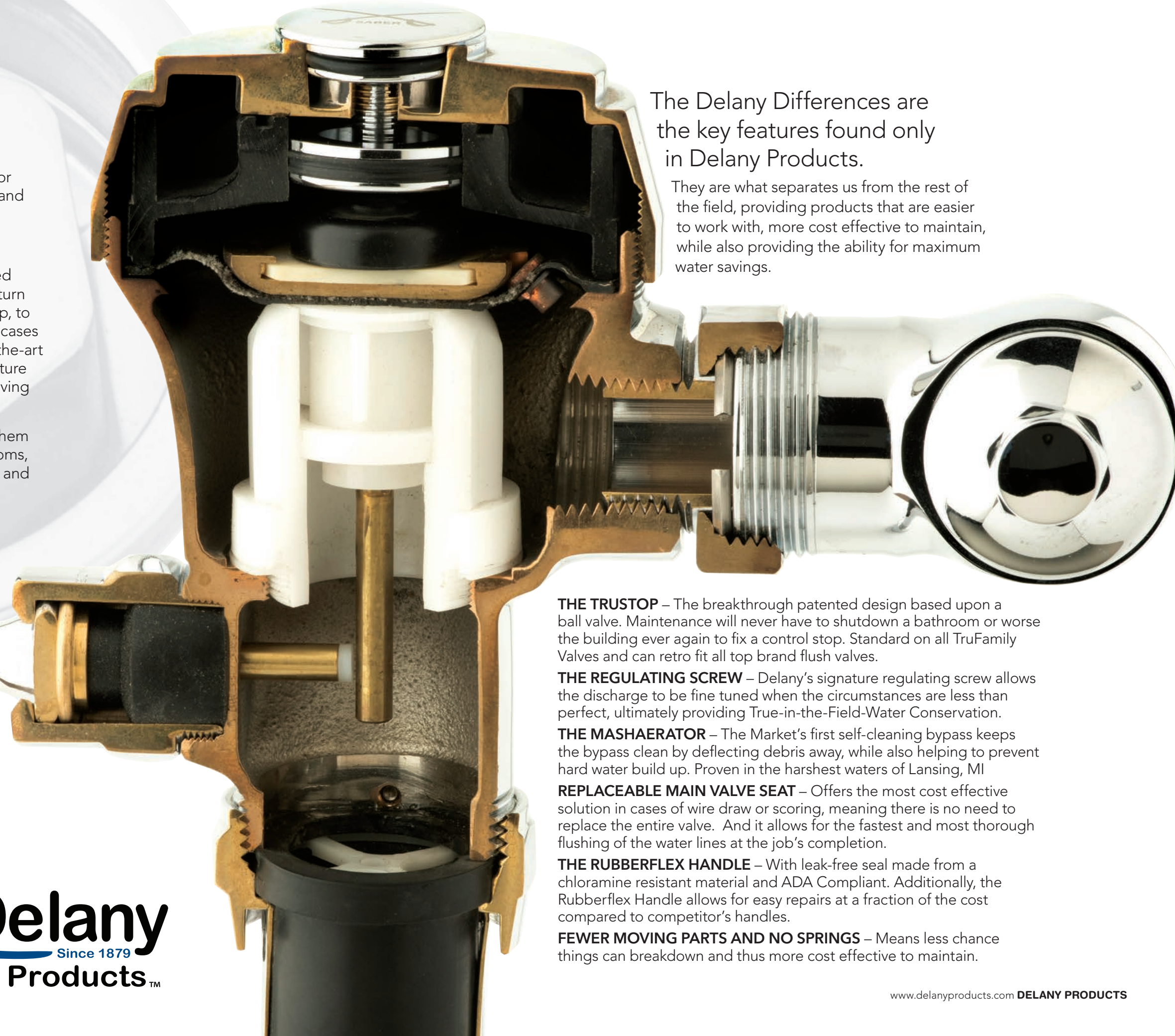
It is evident in everything we do, from our patented **TruStop**, the product that means never having to turn the water off to bathrooms again to fix a leaky stop, to our top-of-the-line **TruSaber**, a proven solution in cases of water hammer. And Now we have our state-of-the-art sensor product, **TruEdge** featuring Delany's signature difference – water flow adjustability in the field, saving time, money and importantly water!

I invite you to get to know our valves, and to use them to help further your designs of commercial restrooms, knowing you are specifying quality, dependability and beauty.

Best,  
Scott Delany, President  
Delany Products

The Delany Differences are the key features found only in Delany Products.

They are what separates us from the rest of the field, providing products that are easier to work with, more cost effective to maintain, while also providing the ability for maximum water savings.



**THE TRUSTOP** – The breakthrough patented design based upon a ball valve. Maintenance will never have to shutdown a bathroom or worse the building ever again to fix a control stop. Standard on all TruFamily Valves and can retro fit all top brand flush valves.

**THE REGULATING SCREW** – Delany's signature regulating screw allows the discharge to be fine tuned when the circumstances are less than perfect, ultimately providing True-in-the-Field-Water Conservation.

**THE MASHAERATOR** – The Market's first self-cleaning bypass keeps the bypass clean by deflecting debris away, while also helping to prevent hard water build up. Proven in the harshest waters of Lansing, MI

**REPLACEABLE MAIN VALVE SEAT** – Offers the most cost effective solution in cases of wire draw or scoring, meaning there is no need to replace the entire valve. And it allows for the fastest and most thorough flushing of the water lines at the job's completion.

**THE RUBBERFLEX HANDLE** – With leak-free seal made from a chloramine resistant material and ADA Compliant. Additionally, the Rubberflex Handle allows for easy repairs at a fraction of the cost compared to competitor's handles.

**FEWER MOVING PARTS AND NO SPRINGS** – Means less chance things can breakdown and thus more cost effective to maintain.

**TruSTOP**

**TruSABER** **TruEDGE**

**EMPIRE**

**INFINITE** go green series  
having no boundaries or limits

**Delany**  
Since 1879  
**Products™**



# TruSTOP

**TruStop** with the **TruChek** control stop is the newest innovation from Delany Products.

The patented **TruStop** moves the back check from the incoming water supply side of the control stop to the flush valve side in a ball valve design. With just a 1/4 turn of a ball valve, you can shut off the **TruStop**. This means NO MORE system-wide water shutoffs to change a control stop. Best of all, the **TruStop** retrofits to ALL flush valves including Sloan, American Standard and Zurn.

*"Oh, if I have to fix a control stop, I simply won't. I know that means turning the water off to the building. So, I call the maintenance repair team and they come at night. I can only guess what they charge for calls at night"*

– Building Engineer,  
New York City School System

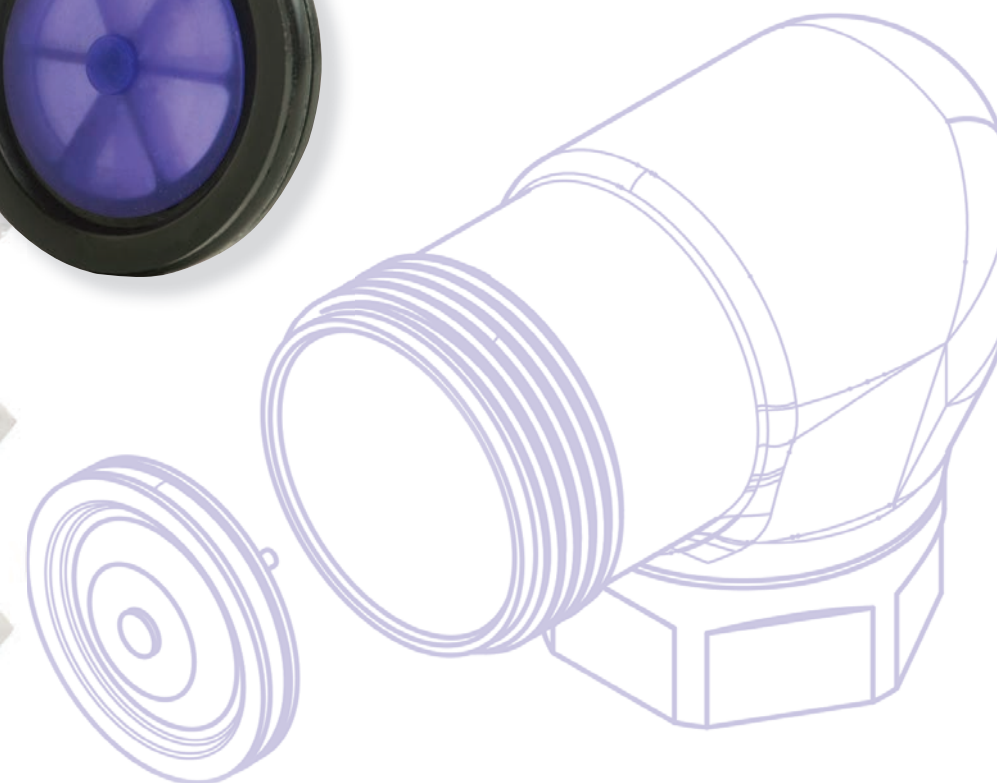
- A.** Vandal proof and a simple 1/4 turn for shutoff
- B.** Ball valve design that will last for decades
- C.** Retrofits with all leading flush valve brands



## Differences:

- No need to shut off water to the entire restroom or worse
- Turn water off at the source for easy and fast replacement of the TruChek
- Designed to fit any manufacturers valve
- The leak-free design of a ball valve means less frequent maintenance
- No need for HEPA containment tents in hospitals
- Vandal Proof

See the  
**TruStop**  
in Action





# TruSABER



You notice the difference in Delany's top-of-the-line valve the minute you see it.

Starting with its sleek streamlined control stop, the **TruStop**, to the hex nutless cover, the **TruSaber** is a flush valve that is beauty itself.

No external hex nut also means there's no chance of a clawed wrench ever being used that would permanently scar the chrome and destroy the look. **TruSaber** – beautiful, right out of the box and beyond.



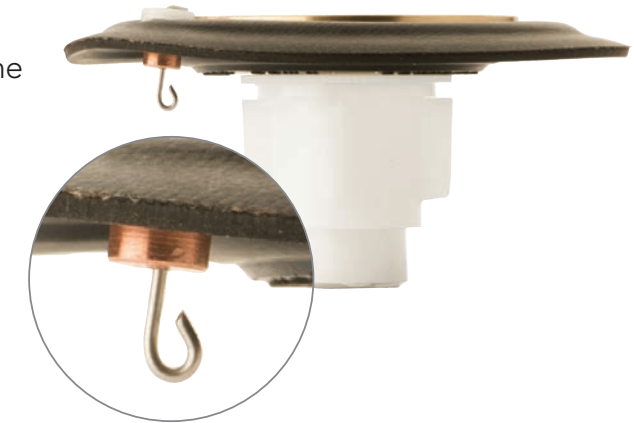
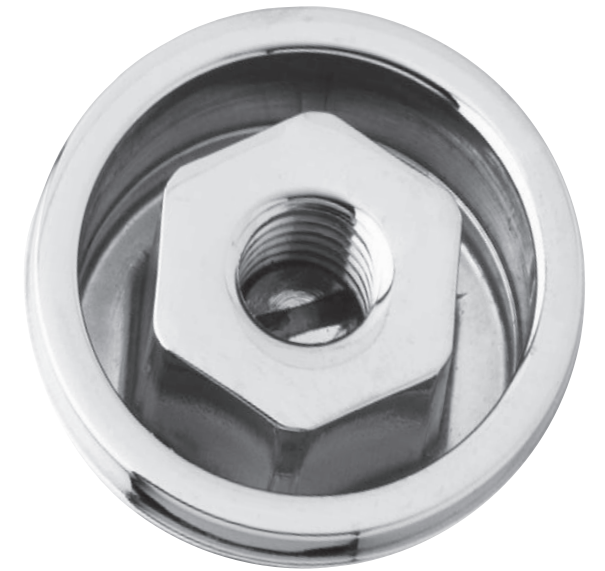
## The Differences

A proven solution to many water hammer issues caused by other flush valves.

The Upper Chamber Regulating Screw allows for true-in-the-field water conservation by allowing just a little more or a little less water in less than optimal circumstances.

Delany's Mashaerator diaphragm, standard on every **TruSaber** valve, prevents hard water build up and keeps the bypass free of debris.

**TruSaber** is now standard with the **TruStop** ball valve design control stop. The patented stop means maintenance will never have to turn the water off to the bathroom ever again.



## Proven to Solve Water Hammer Issues

June 1, 2020

*I am an 18-year veteran of the University of Denver's Plumbing Shop. At Strum Hall, within the first year of completion we began to experience a water hammer issue that rattled the walls.. Having tried everything short of installing larger WH arrestors, we agreed to try the **TruSaber**. I was blown away. The water hammer was gone!*

– David Kautz  
Facilities Master Plumber  
University of Denver



To Learn more about how the **TruSaber** conquers Water Hammer watch this video





The TruEdge is Delany Products' new top-mounted, battery-powered, sensor-activated flush valve.

## TruEDGE

*"At the Covenant Lower School we trust the TruEdge electronic valve and its handsfree feature as it provides a more hygienic solution for our young students. Delany Products stands behind its valves and I really, really like the TruEdge.*  
Will Hatter

Covenant Lower School  
Charlottesville, VA

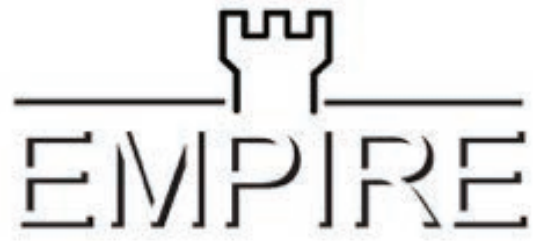


### Differences:

- STATE OF THE ART SOLENOID  
Providing an incredible flow rate through the valve even at lowest pressures
- BATTERY LIFE  
Up to 375,000 life cycles on single battery
- DESIGNED TO HANDLE HIGHLY CHLORINATED WATER SUPPLIES
- NEW ROBUST CIRCUITRY  
User-friendly Battery Holder  
IP64 Standard connections and encased circuitry  
Stress Relief feature on all wire connections  
Fast, Easy Replacement of Battery:  
CR-P2 Lithium battery
- USER-FRIENDLY REMOTE CONTROL FOR QUICK EASY ADJUSTMENTS  
Adjust range  
Adjust flow
- STANDARD with the MASHAERATOR and the TruSTOP





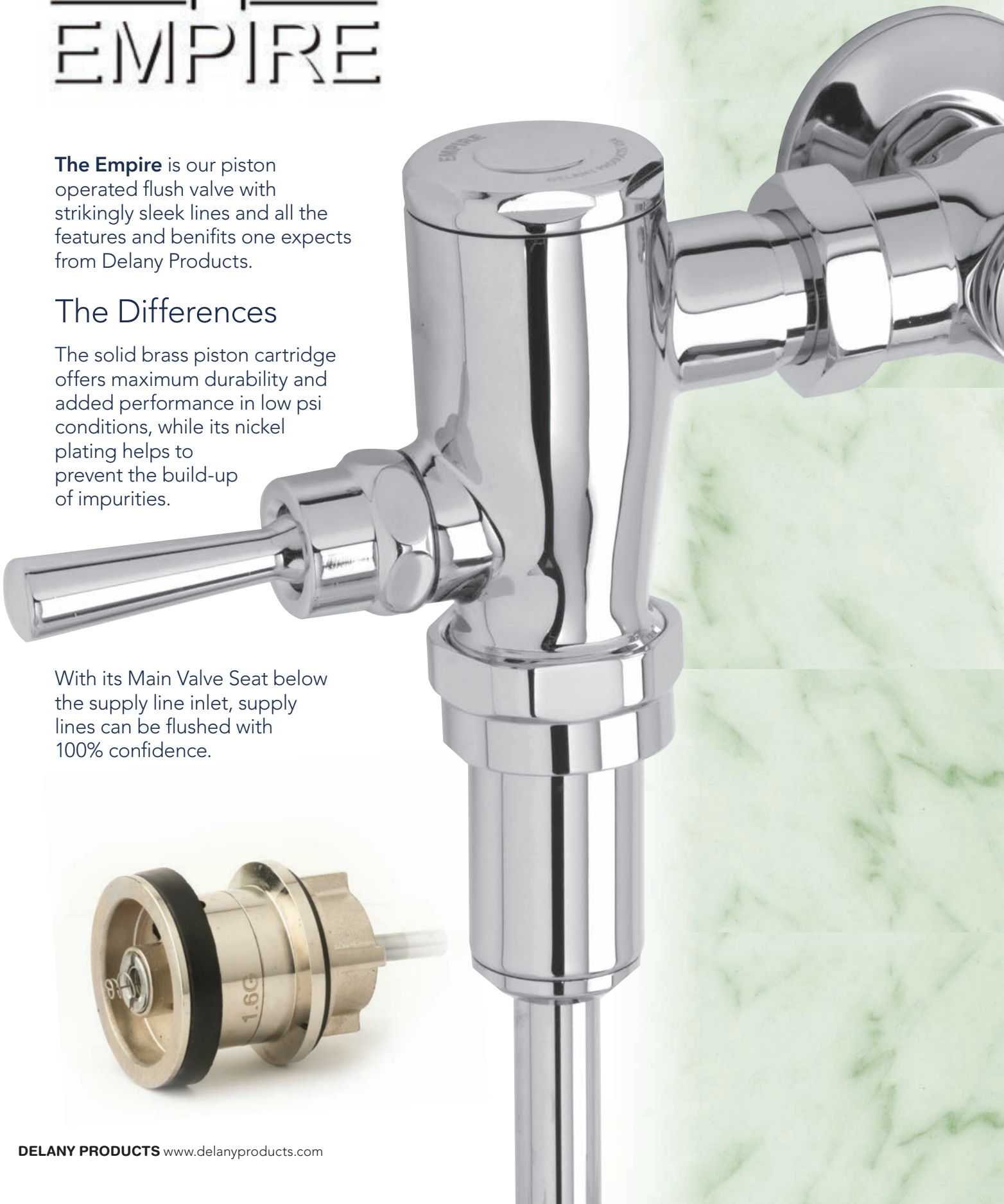


The Empire is our piston operated flush valve with strikingly sleek lines and all the features and benefits one expects from Delany Products.

### The Differences

The solid brass piston cartridge offers maximum durability and added performance in low psi conditions, while its nickel plating helps to prevent the build-up of impurities.

With its Main Valve Seat below the supply line inlet, supply lines can be flushed with 100% confidence.



## Infinite Series Faucets

Having no boundaries or limits, this is the promise of the Infinite line of faucets. The two **distinctive styles** allow for design options in any type of bathroom, while the **water-saving features** and **ease of installation** make these the ONLY faucets worthy of the name Delany.

### The Differences:

100% Solid Brass Construction

Programmable hygiene flush to control bacteria growth.

Programmable "on" "off" feature

Remote control adjustments



go green series  
**INFINITE**

